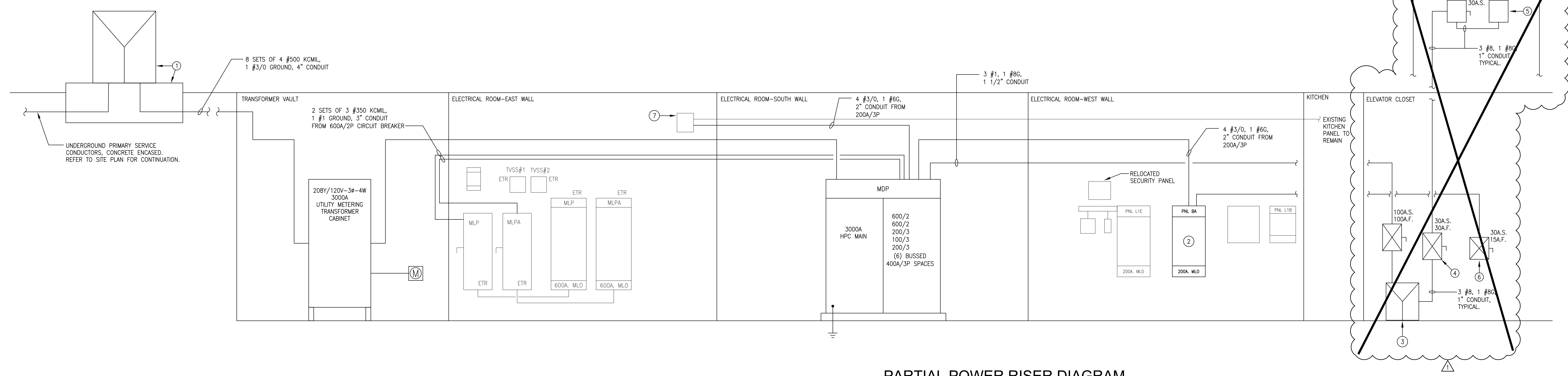


EXISTING PARTIAL POWER RISER DIAGRAM
SCALE: N.T.S.

CODED NOTES:
 (U) RELOCATE EXISTING TELEPHONE AND SECURITY EQUIPMENT TO WEST WALL. MAINTAIN CONTINUITY.



PARTIAL POWER RISER DIAGRAM
SCALE: N.T.S.

- CODED NOTES:**
- NEW 300 KVA, 208Y/120 VOLT-3ø-4W TRANSFORMER BY UTILITY COMPANY. TRANSFORMER VAULT BY THE EC PER UTILITY COMPANY STANDARDS. (TO BE SIZED FOR FUTURE 1000KVA TRANSFORMER)
 - NEW 200A 208V-3ø PANEL
 - 300VA AUTO TRANSFORMER BY ELEVATOR MANUFACTURER. INSTALLED BY THE EC PER 208V-3ø PRIMARY/480V-3ø SECONDARY.
 - 30A.S./30A.F. SHUNT TRIP WITH AUX CONTACTS.
 - FUSEBOX PROVIDED BY ELEVATOR MANUFACTURER.
 - 120V-1ø ELEVATOR CAB LIGHTING FUSED DISCONNECT.
 - INTERCEPT AND EXTEND EXISTING 200A FEEDER FROM KITCHEN PANEL IN CORRE SIZED JUNCTION BOX, AND EXTEND TO MDP.

MAIN DISTRIBUTION PANEL SCHEDULE

| LOAD | DEV. NO. | KWC | KWD | CB SIZE | NOTES |
|---------------|----------|-----|-----|---------|-------|
| MLP | 1 | - | - | 600/3 | |
| MLPA | 2 | - | - | 600/3 | |
| PANEL BA | 3 | - | - | 200/3 | |
| ELEVATOR | 4 | - | - | 100/3 | |
| KITCHEN PANEL | 5 | - | - | 200/3 | |
| SPACE | 6 | - | - | 400/3 | |
| SPACE | 7 | - | - | 400/3 | |
| SPACE | 8 | - | - | 400/3 | |
| SPACE | 9 | - | - | 400/3 | |
| SPACE | 10 | - | - | 400/3 | |
| SPACE | 11 | - | - | 400/3 | |
| TOTAL | | | | | |

342.9 KWD @ 120/208 VOLT - 3ø-4W = 946 AMPS

EXISTING PANEL OLD 240
TO BE DEMOLISHED

208/120 VOLTS 3 PH 4 WIRE SOLID NEUTRAL MOUNTING: RECESSED
100 AMPERE BUS 100 AMPERE MAIN LUG ONLY

| KVA | DESCRIPTION | A | B | C | DESCRIPTION | KVA |
|-----|------------------------|---|---|---|-------------|------------------------|
| 1 | | | | | 2 | |
| 3 | | | | | 4 | |
| 5 | VACUUM CLEANER | | | | 6 | WEST BLAST FAN |
| 7 | WEST EXHAUST FAN (OFF) | | | | 8 | EAST BLAST FAN |
| 9 | AUDITORIUM FAN | | | | 10 | EAST EXHAUST FAN (OFF) |
| 11 | KILN CART ROOM (OFF) | | | | 12 | GYM FAN |
| 13 | VACANT | | | | 14 | TOILET EXHAUST FAN |

GROUND KVA SUB TOTALS NEUTRAL
TOTAL CONNECTED LOAD XXX KVA
TOTAL DEMAND LOAD XXX KVA

EXISTING PANEL L1E

208/120 VOLTS 3 PH 4 WIRE SOLID NEUTRAL MOUNTING: RECESSED
100 AMPERE BUS 100 AMPERE MAIN LUG ONLY

| KVA | DESCRIPTION | A | B | DESCRIPTION | KVA |
|-----|-----------------------|------|-------|-----------------|-----|
| 1 | REC. RM. #B2 | 20/1 | 20/1 | REC. RM. #B25 | 2 |
| 3 | REC. RM. #B2 | 20/1 | 20/1 | REC. RM. #B25 | 4 |
| 5 | REC. RM. #B20 | 20/1 | 20/1 | REC. RM. #B19 | 6 |
| 7 | REC. RM. #B20 | 20/1 | 20/1 | REC. RM. #B19 | 8 |
| 9 | REC. RM. #B18 | 20/1 | 20/1 | F.A.C.P.* | 10 |
| 11 | REC. RM. #B18 | 20/1 | 20/1 | SPARE | 12 |
| 13 | IN ON POSITION | 20/1 | 20/1 | PANEL ROOM B-16 | 14 |
| 15 | IN ON POSITION | 20/1 | 20/1 | PANEL ROOM B-16 | 16 |
| 17 | IN ON POSITION | 20/1 | 100/1 | IN ON POSITION | 18 |
| 19 | CAB LIGHTING | 20/1 | 20/1 | | 20 |
| 21 | HOISTWAY | 20/1 | 20/1 | SUMP PUMP | 22 |
| 23 | PIT LIGHTING AND REC. | 20/1 | 20/1 | | 24 |
| 25 | IN OFF POSITION | 20/1 | 20/1 | | 26 |
| 27 | IN OFF POSITION | 20/1 | 20/1 | | 28 |
| 29 | | 20/1 | 20/1 | | 30 |

GROUND KVA SUB TOTALS NEUTRAL
TOTAL CONNECTED LOAD XXX KVA
TOTAL DEMAND LOAD XXX KVA

PANEL BA

208/120 VOLTS 3 PH 4 WIRE SOLID NEUTRAL MOUNTING: SURFACE
200 AMPERE BUS 200 AMPERE MAIN LUG ONLY

| KVA | DESCRIPTION | A | B | C | DESCRIPTION | KVA |
|-----|--------------------|------|------|---|----------------|----------------|
| 1 | AUDITORIUM FAN | 30/3 | 70/3 | | WEST BLAST FAN | 2 |
| 3 | | | | | 4 | |
| 5 | | | | | 6 | |
| 7 | GYM FAN | 30/3 | 70/3 | | 8 | EAST BLAST FAN |
| 9 | | | | | 10 | |
| 11 | | | | | 12 | |
| 13 | TOILET EXHAUST FAN | 30/3 | 15/2 | | 14 | HEAT PUMP |
| 15 | | | | | 16 | |
| 17 | | | | | 18 | SPARE |
| 19 | EXISTING CIRCUIT | 20/1 | 20/1 | | 20 | SPARE |
| 21 | EXISTING CIRCUIT | 20/1 | 20/1 | | 22 | SPARE |
| 23 | EXISTING CIRCUIT | 20/1 | 20/1 | | 24 | SPARE |
| 25 | EXISTING CIRCUIT | 20/1 | 20/1 | | 26 | SPARE |
| 27 | EXISTING CIRCUIT | 20/1 | 20/1 | | 28 | SPARE |
| 29 | EXISTING CIRCUIT | 20/1 | 20/1 | | 30 | SPARE |
| 31 | SPACE | | | | 32 | SPACE |
| 33 | SPACE | | | | 34 | SPACE |
| 35 | SPACE | | | | 36 | SPACE |
| 37 | SPACE | | | | 38 | SPACE |
| 39 | SPACE | | | | 40 | SPACE |
| 41 | SPACE | | | | 42 | SPACE |

GROUND KVA SUB TOTALS NEUTRAL
TOTAL CONNECTED LOAD XXX KVA
TOTAL DEMAND LOAD XXX KVA

BENJAMIN FRANKLIN
PreK-8 SCHOOL
ELEVATOR
INFRASTRUCTURE

| ISSUE DATE | PROJECT STATUS |
|------------|----------------|
| 06.13.2018 | BID/PERMIT |
| 08.02.2018 | ADDENDUM #1 |

REVISION SCHEDULE

| DATE | DESCRIPTION |
|------|-------------|
| | |

SHEET NAME: SPECIFICATIONS, SCHEDULES AND DETAILS

SEAL:

1665 PROJECT NO.
06.13.2018 DATE
ME0.2 DRAWING NO.
DRAWN BY: MTD CHECKED BY: MTD